



ORCHESTRA DELL'ACCADEMIA TEATRO ALLA SCALA

AUDIZIONI BIENNIO 2024/2026

PROGRAMMA DI AUDIZIONE PER  
OTTAVINO

Tutto il programma d'audizione per FLAUTO più:

**1) PEZZO OBBLIGATORO**

A. Vivaldi, Concerto per ottavino, archi e basso continuo in do maggiore RV 443, primo e secondo movimento in riduzione pianistica

**2) PASSI ORCHESTRALI**

G. Rossini, Semiramide (Sinfonia)

L. van Beethoven, Sinfonia n. 9

G. Bizet, Carmen (n. 3 e n. 19)

P. I. Čajkovskij, Sinfonia n. 4 (III movimento)

L. Délibes, Coppélia (Musique des Automates)

D. Shostakovich, Sinfonia n. 6 (solo I movimento)

SEMIRAMIDE

SINFONIA

G. ROSSINI

Allegro vivace  
1.ª Ott.  
*mf rit/ars.* **ff**

Poco mosso  
*p mosso.* **f**

Allegro  
1.ª Ott.  
**pp**

Fl. solo  
*p* **f** *p* **Ott.**

*p* **f** *p* **Ott.**

Fl. solo  
*p* **f** *p*

**Ott.** **(Ott.)**  
*p* **f** *p*

# Symphonie Nr. 9

d-moll · D minor  
op. 125

331 Allegro assai vivace  $\text{♩} = 84$   
*alla Marcia*

1 1 8 Cl. I  
Fag. I G.P. G.P. 4 5 6

342 *pp*

350

358 H *sempre pp*

365

372 *pp*

380 *poco cresc.*

388 I

395

401 *poco f*

409  *più f.*

415  *f* *più f.*

422  *ff*

429  **K** *sempre l'istesso tempo* **L** **50** **M** **51**

Georgië Bizet

# CARMEN

N. 3

*OTTAVINO* Allegretto moderato

*ppp*

*ten.*

*ten.*

*br*

*un poco meno pp*

*ten.*

*ten.*

*meno p*

*br*

*cresc. poco a poco*

*ten.*

*ten.*

*mf*

*f*

*1*

*1*

*3*

G. BIZET  
CARMEN

OTTAVINO

N. 19

pp

10

pp

Peter Ilyich Tchaikovsky  
Symphony No. 4 in F Minor, Op. 36

Kleine Flöte

I u. II tacent

III. SCHERZO  
Pizzicato ostinato

Allegro A 32 B 28 C 14 D 42

Meno mosso (Ob.) (Fl. 1, 2)

16 11 17

161 E Fl. 16 Kl. 1

ff

Tempo I

14 F (Kl. 1) 9 p

196 2

203 2 G 12 129 H 2 Fl. 1 2 2

357 2 I

più f mf f

369 3 3 3 3

377 3 3 3 3 cresc.

386 3 3 3 3 ff

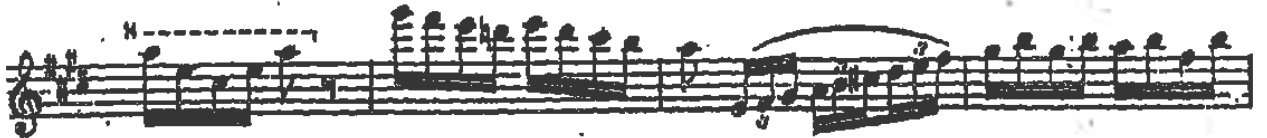
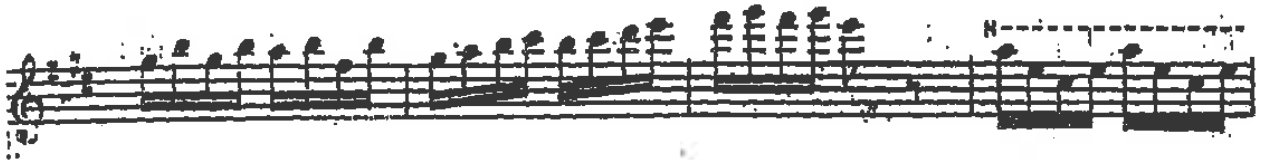
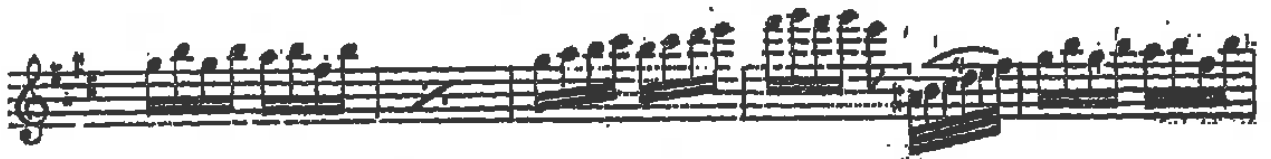
393 3 15

# COPPELIA

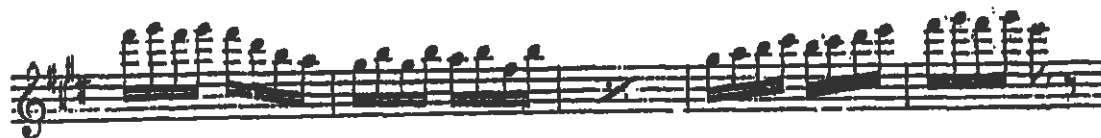
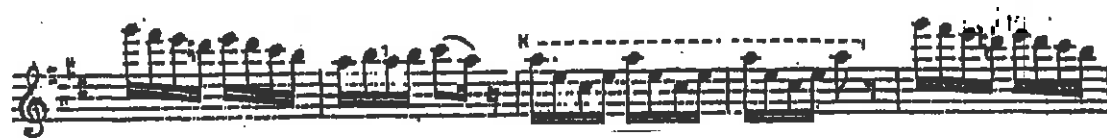
LEO DELIBES.

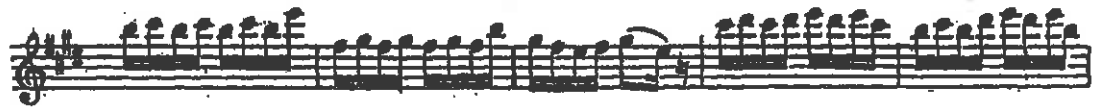
## MUSIQUE DES AUTOMATES.

*Allegro*









DMITRI SCHOSTAKOVICH  
SINFONIA n. 6

Op. 53

OTTAVINO

Musical score for Flute 1 (Ottavino) in D major, measures 8-10. The score is written on two staves. Measure 8 starts with a boxed number '8' and a '2' above the staff. The first staff contains a whole note chord (D4, F#4, A4) and a half note chord (D4, F#4, A4). The second staff contains a half note chord (D4, F#4, A4) and a half note chord (D4, F#4, A4). Measure 9 starts with a boxed number '9' and a 'p' dynamic marking. The first staff contains a half note chord (D4, F#4, A4) and a half note chord (D4, F#4, A4). The second staff contains a half note chord (D4, F#4, A4) and a half note chord (D4, F#4, A4). Measure 10 ends with a boxed number '10'. The first staff contains a half note chord (D4, F#4, A4) and a half note chord (D4, F#4, A4). The second staff contains a half note chord (D4, F#4, A4) and a half note chord (D4, F#4, A4).